

Congratulations on purchasing the DayRay[®] Solar Hybrid lighting System

Your Tile DayRay[®] Kit Includes



2 x Tile roof bracket and fixings
6 x Ø6.3mm x 80mm wood screws
2 x Aluminium fixing nut
2 x A2-70 M8 Hexagon screw
2 x M8 antiskid washer
eg. one piece of M8 spring washer



1 x Rail 750mm long



2 x End clamp
2 x A2-70 M8 Hexagon screw
2 x Aluminium fixing nut



1 x Skypanel (Solar panel) with 10mtr cable attached



1 x VividDay™ Downlight Square or Circular

Tools Required For Installation

- Pencil
- Gyprock saw
- Stanley knife
- 6mm Allen key
- Impact Drill with 3/8 Hex bit
- Grinder with tile cutting blade
- Safety goggles
- Ladders
- Suitable safety equipment for working on roofs

Your Tile Double DayRay[®] Kit Also Includes



2nd VividDay™ Downlight Square or Circular
Splitter
5 or 10mtr Skycable

Optional Accessories



Wall Switch
5 or 10mtr Skycable



Step 1 Choose a suitable location for DayRay downlights with a minimum clearance from any structural element of 20mm.

IC-F	RISK OF FIRE-Required clearance from structural members and building elements	
	SCB=20mm	HCB=20mm

SCB – Side Clearance to Building element. HCB – Height Clearance to Building element.

Step 2 Remove the template from the front of the Downlight box. Push a nail through the centre of the template. Hammer the nail through the ceiling in the centre of the chosen location. Mark the outside of the template with a pencil. Remove template and cut out ceiling.

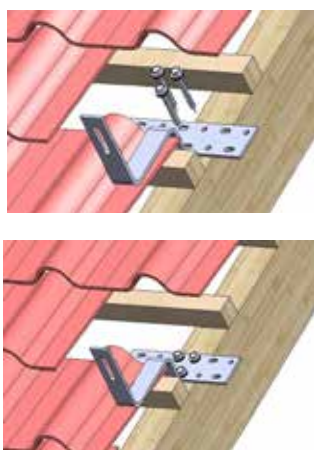
Step 3 Install downlight into hole. Lift spring clips and push downlight into hole. Spring clips will clamp against the ceiling.

Step 4 If installing Double DayRay system remove second downlight from box, connect 5mtr cable to downlight and splitter to the end of the five metre cable. Repeat steps above for installing downlight.

Step 5 Choose a suitable location for the Skypanel that will receive the most sunlight. Ideally North facing.

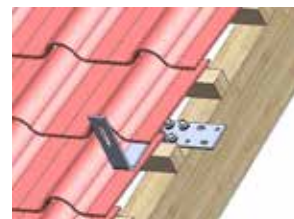
Step 6 Remove or slide back two to three tiles side by side to expose the two trusses or rafters (minimum third down from the ridge)

Step 7 Sit tile brackets on top of the two exposed rafters so that bracket runs over the low point (valley) of the lower tile. Pack the brackets off rafters as required to ensure bracket runs parallel to rafter. Fix to rafters using screws provided ensuring minimum three fixings per bracket.



Step 8 Sit the solar panel on the roof. Place Sky cable beside roof bracket, if sarked cut small hole in sarking and feed Sky cable into roof cavity. Ensure cable can slide without getting damaged

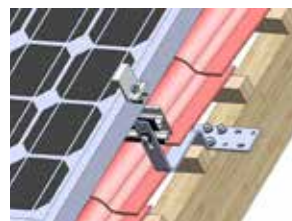
Step 9 Re fit tiles over bracket. Ensure tile sits neatly over bracket. Notch out front of tile if required to allow tiles normal coverage.



Step 10 Use the M8*25 Hexagon screw, M8 spring washer, M8 antiskid washer and fixing nut to connect the rail to the Tile Hook.



Step 11 Sit the centre of the Solar Panel over the middle of the rail. Using end clamps with M8*25 Hexagon screw and fixing nuts, attach solar panels to the rails.



Step 12 From within the roof cavity connect the male connector from the solar panel to the female connector on the back of the downlight. Refer to wiring detail if installing Double DayRay or Wall Switch.

Now enjoy free lighting from your DayRay system!

SKYDOME® Pioneering the sunny side of life.

P 13 14 24 www.skydome.com.au

Skydome Head Office
Skydome QLD
Skydome Hunter Coast

30 Artisan Rd, Seven Hills
Unit 2, 11 Eileen St, Underwood
14 Barralong Rd, Erina / 20 Brunner Rd, Broadmeadow

DayRay®
FLEXIBLE DAYLIGHTING