

Congratulations on purchasing the DayRay[®] Solar Hybrid lighting System

Your Metal DayRay[®] Kit Includes



2 X L Feet metal roof bracket
2 X 12 guage Roofing screw
2 X Aluminium fixing nut
2 X A2-70 M8 Hexagon screw
2 X M8 antiskid washer
eg. one piece of M8 spring washer
2 x Piece of EPDM waterproof gasket



1 x Rail 750mm long



2 x End clamp
2 x A2-70 M8 Hexagon screw
2 x Aluminium fixing nut



1 x Skypanel (Solar panel) with 10mtr cable attached



1 x VividDay™ Downlight Square or Circular

Tools Required For Installation

- Pencil
- Gyprock saw
- Stanley knife
- 6mm Allen key
- Impact Drill with 3/8 Hex bit
- Drill with 20mm metal bit
- Silicone
- Safety goggles
- Ladders
- Suitable safety equipment for working on roofs

Your Metal Double DayRay[®] Kit Also Includes

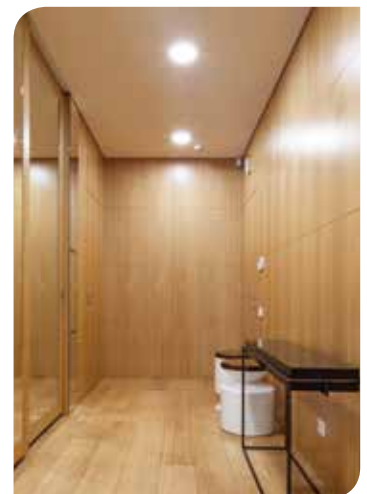


Splitter
5 or 10mtr Skycable
2nd VividDay™ Downlight Square or Circular

Optional Accessories



Wall Switch
5 or 10mtr Skycable



Step 1 Choose a suitable location for DayRay downlights with a minimum clearance from any structural element of 20mm.

IC-F

RISK OF FIRE-Required clearance from structural members and building elements	
SCB=20mm	HCB=20mm

SCB – Side Clearance to Building element. HCB – Height Clearance to Building element.

Note: The VividDay downlight is IC-F rated.

Step 2 Remove the template from the front of the Downlight box. Push a nail through the centre of the template. Hammer the nail through the ceiling in the centre of the chosen location. Mark the outside of the template with a pencil. Remove template and cut out ceiling.

Step 3 Install downlight into hole. Lift spring clips and push downlight into hole. Spring clips will clamp against the ceiling.

Step 4 If installing Double DayRay system remove second downlight from box, connect 5mtr cable to downlight. Connect splitter to the end of the five metre cable. Repeat steps above for installing second downlight.

Step 5 Choose a suitable location for the Skypanel that will receive the most sunlight. Ideally North facing.

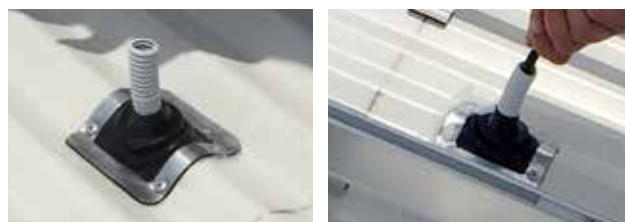
Step 6 Position L Feet roof brackets four corrugations apart (Approximately 305mm) and screw into roof sheet with EDPM waterproof gasket between base of bracket and roof sheet. Ensure fixings go into the existing batten line.



Step 7 Use the M8*25 Hexagon screw, M8 spring washer, M8 antiskid washer and fixing nut to connect the rail to the L Feet.



Step 8 Drill a 20mm hole above the batten line in the centre of the two L feet ensuring the drill goes through the roofing blanket. Install dektite flashing and conduit. Feed Sky cable from Skypanel through conduit into roof cavity.



Step 9 Sit the centre of the Solar Panel over the middle of the rail. Using end clamps with M8*25 Hexagon screw and fixing nuts, attach solar panels to the rails.

Step 10 From within the roof cavity connect the male connector from the solar panel to the female connector on the back of the downlight. Refer to wiring detail if installing Double DayRay or Wall Switch.


Now enjoy free lighting from your DayRay system!

SKYDOME® *Pioneering the sunny side of life.*

P 13 14 24 www.skydome.com.au

Skydome Head Office
Skydome QLD
Skydome Hunter Coast

30 Artisan Rd, Seven Hills
Unit 2, 11 Eileen St, Underwood
14 Barralong Rd, Erina / 20 Brunner Rd, Broadmeadow


DayRay®
FLEXIBLE DAYLIGHTING