

# SKYTUBE INTECH

**The next generation**



**ABOVE**  
Before (top) and After (above) - Skytube Intech provides the perfect level of light in those areas of the house where it is most needed - year round!

**BELOW**  
Before (left) and After (right) - Skytube Intech's compact size makes it the ideal skylight solution for small spaces, where a traditional skylight size is unwarranted.



We are proud to introduce the next generation tubular skylight - Skytube Intech®, the most advanced tubular skylight in the world. Simple and smart technology that captures low elevation light and finally solves the mystery of how best to deliver light...and here is how.

**A skylight must achieve TWO basic objectives:**

- 1: Collect the light
- 2: Transfer the light to the room below

The new Skytube Intech draws on One Bounce® Technology and adds another dimension to tubular skylights. It is the Intech lens that optimises the throughput of light from down to dusk.

Until now, tubular skylights have only performed at their optimum level when the sun is high in the sky (from 10.00am to 2.00pm). In most instances, tubular skylight performance decreases dramatically in the early and late afternoon when needed most. Skytube Intech collects the low elevation sunlight in the early morning, late afternoon and winter, whilst at the same time regulating the light during the hot midday summer sun to provide cooler daylight.

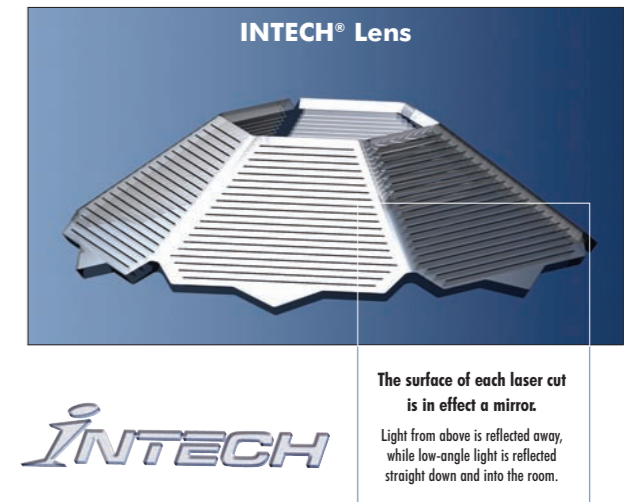
The original Skytube was awarded the Australian design mark in 1994 in recognition of the innovations it brought to the international skylight market. The use of our patented Variable Pitch Adaptor enables us to provide a straight path of light between any roof pitch and ceiling, and to bypass obstacles without having to bend our tube around them. To this day, copycat products resort to the use of light-reducing angle adaptors (elbows) or low-performing flexible ducting to avoid obstacles. It is common knowledge that "light does not travel around corners".

The transfer of light down the tube (or the light transfer pipe), is particularly enhanced with Silvertube, a 97% reflective, light transfer pipe. This guarantees minimal light loss between what enters and what is transferred to the room below.

**Skytube Intech is a truly smart skylight.**

## THE INTECH LENS

The Intech Lens is a laser cut, light-redirecting device which increases the performance of tubular skylights by up to four times. It is conical in shape to ensure it works to utmost performance, regardless of sun orientation. Each surface of the laser cut is a mirror, specifically engineered to capture low elevation sunlight and redirect it down the highly reflective Skytube shaft to your room below. The centre aperture of the Intech lens controls and balances light input and heat reduction, ensuring cool daylight in summer. You can now enjoy quality daylight hours from early morning to late afternoon.



## HOW IT WORKS

Low Elevation Sun (morning or afternoon)		Midday Summer Sun	
<b>X Traditional Design</b>	<b>✓ Intech Design</b>	<b>X Traditional Design</b>	<b>✓ Intech Design</b>
Very little early morning, late afternoon and low elevation winter sunlight is captured. Too many bounces negates performance.	Captures the early morning, late afternoon and low elevation winter sunlight.	Allows all of the hot midday summer sun to shine directly into the room.	Restricts the hot midday summer sun, providing cool daylight to the room.

## UPGRADE YOUR EXISTING SKYTUBE

**Modern Technology and peace of mind.**

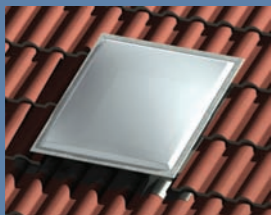
The Intech Lens can be easily fitted to existing Skytubes. It has been specifically designed so that our existing customers can take advantage of the new Intech lens. The age of your existing tubular skylight will determine the most suitable upgrade kit from our extensive range.

Furthermore, if you have one of our qualified technicians install the upgrade for you, we will service your existing skylight and, in most cases, give you an additional 12 month warranty on all parts and installation.

Contact one of our consultants for more details.



## SKYDOME

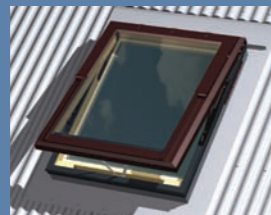


The original SKYDOME® remains the number one choice when it comes to delivering natural light to any area of the home.

Installing a SKYDOME provides the freedom to design any room away from the exterior walls while delivering natural light in a cost- and energy-efficient way.

SKYDOMEs are domed skylights that suit most types of roofing systems.

## SKYWINDOW

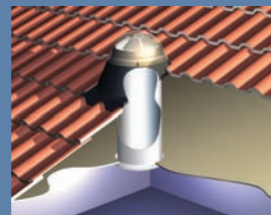


A SKYWINDOW™ provides an opportunity for architects, designers, builders and renovators to deliver light, air and life to any part of a building.

A SKYWINDOW will add a new dimension to any home by introducing natural light and refreshing breezes to any room.

SKYWINDOWs are double-glazed, Nordic pine and have been awarded a five-star energy rating.

## SKYTUBE INTECH



The SKYTUBE INTECH™ is the highest performing tubular skylight of its kind on the market.

Specifically designed with energy efficiency in mind, SKYTUBE INTECH has raised the bar, delivering the ultimate in cool daylight performance.

SKYTUBE INTECH provides the perfect solution for dark rooms where a traditional skylight size is unwarranted; they are also ideal for larger rooms which demand task lighting.



## INSTALLATION

The Skytube Intech is easy to install. Moulded flashings are designed to suit specific roof types, facilitating ease of installation and most importantly, water-tightness.

We provide a comprehensive installation service; fully warranted. We will gladly provide you with obligation free advice and quotations. Selecting the right type of product and size for your home can be a daunting exercise. Rest assured our technicians are trained to provide you with the right advice and to help you make the right choice, first time.

## OUR QUALITY GUARANTEE

In the unlikely event of a product or installation fault, we offer a seven-year guarantee on our products and installations.

There are companies offering lifetime guarantees, but as an active SIAI (Skylight Industry Association Inc) member, we'd like to offer you the following advice: check the actual cover of their guarantee; does it only cover specific parts of the product or are they guaranteeing product as well as installation?

All installations completed by Skydome technicians are guaranteed by Skydome and not by unqualified subcontractors. Electrical components not manufactured by Skydome are subject to the original manufacturer's warranty.

**HIA member**  
the best in the business   
Housing Industry Association Ltd



For further information on the complete SKYDOME range of skylight solutions, or for an obligation-free consultation, please contact your nearest SKYDOME consultant.



### NEW SOUTH WALES

**SALES & SHOWROOM**  
64 Victoria Road,  
Drummoyne NSW 2047  
[Click here for directions](#)

**SHOWROOM & FACTORY**  
30 Artisan Road  
Seven Hills NSW 2147  
[Click here for directions](#)

**CONTACTS**  
Ph: 13 14 24 (sales)  
Ph: 02 9745 1522 (admin)  
Fax: (612) 9744 1267  
Email: [sales@skydome.com.au](mailto:sales@skydome.com.au)

### QUEENSLAND

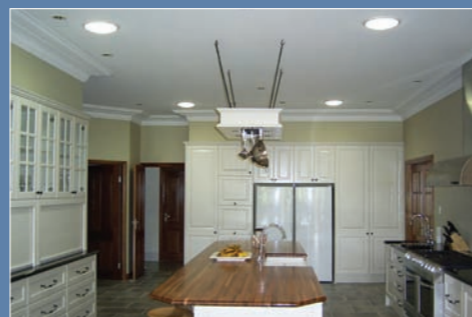
**SALES & SHOWROOM**  
Unit 2,11 Eileen Street,  
UNDERWOOD  
Qld 4119

P.O. Box 940,  
Slacks Creek Qld 4127

Ph: (07) 3299 4377  
Fax: (07) 3208 0701  
Email: [sales@skydome.com.au](mailto:sales@skydome.com.au)

[Click here for directions](#)

[www.skydome.com.au](http://www.skydome.com.au)  
[info@skydome.com.au](mailto:info@skydome.com.au)



## 400 SERIES

The new 400mm diameter series is another brilliant Skydome innovation. The stylish ceiling diffuser allows ventilation to be controlled at the ceiling level. It has three positions: closed, half vent and full vent. The 400 series utilises two forms of light-carrying systems:

- **Option One** - the 400mm Flexitube®, utilises a flexible lightshaft (as shown right).
- **Option Two** - the 400mm Skytube®, utilises the high performance Silvertube.

Please note, for maximum performance and energy efficiency, we recommend the use of our Intech lens for option one.



The 400 Series Diffuser

## ACCESSORIES

Because every home is unique, there is a wide range of Skytube Intech accessories available to suit your requirements and complement your decor.

These include leadlight diffusers, gold and chrome ceiling rings, Skylamp electric light fittings, coloured flashings, and an extensive range of passive and mechanical ventilation options.



## SKYTUBE VENTILATION

### The perfect bathroom, laundry or toilet solution.

The Skytube Intech is available as a mechanically vented model. It combines natural light, mechanical exhaust and an optional electric light fitting, all from the one ceiling opening. Our powerful exhaust fan is mounted on the roof so all steam and odours are vented directly outside rather than into your roof space; this represents a major advancement over traditional exhaust systems. Our exhaust fans quietly and efficiently provide ventilation for up to three rooms per fan, giving you cost and energy savings. Ask our consultants for advice on which system best suits your needs.

